

INTERMATIC® Power Failure Path Lighting

MODEL EL500

Installation and User Instructions

Specifications

- Voltage — 120 Volts, 50/60 Hz
- Consumption — 17.0 watts max.
- Battery — Single rechargeable AA NiMH provides 4 hours life in use
- Light Source — 3 high-output white LEDs
- Temperature Operating Range — 32°F to 104°F / 0°C to 40°C
- Storage Range — -31°F to 158°F / -35°C to 70°C
- Environmental — 10% to 95% non-condensing relative humidity
- For Indoor Use Only

WARNING

- **Electrical shock hazard. To avoid fire, shock, or death, turn off power at circuit breaker and test that power is off before wiring.**
- **Follow local electrical codes during installation.**
- **Connect to copper conductors only.**
- **Connect to Class 1 wiring only.**

NOTICE

- **No user-serviceable parts.**

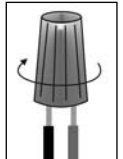
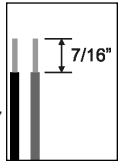
Before You Begin

NOTE: This unit must be connected to the same circuit as the smoke detectors.

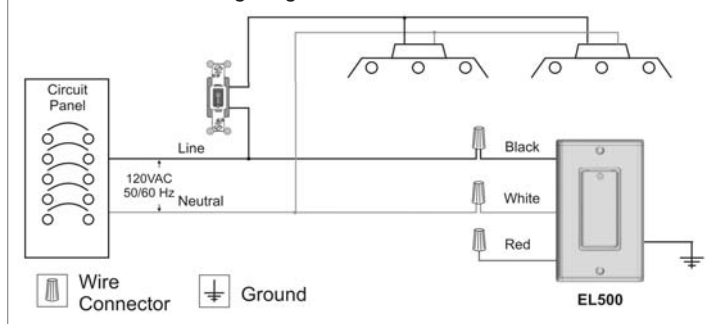
1. Turn off power at the service panel by REMOVING FUSE or TURNING THE CIRCUIT BREAKER OFF.
2. Test to VERIFY that the power is off.

Installation

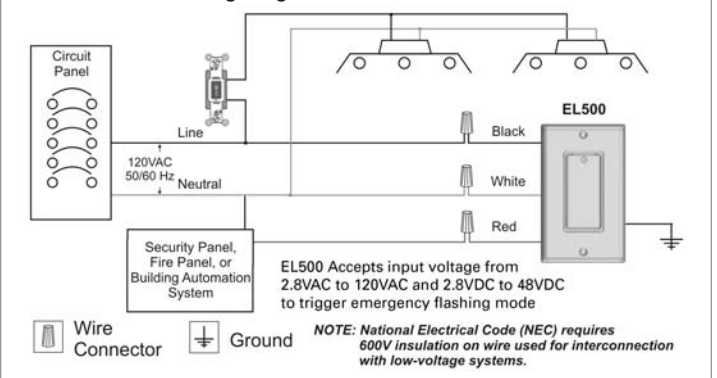
1. Remove existing receptacle from the wall box (if necessary).
2. Strip building wires to 7/16".
3. Connect the BLACK wire to the line building wire, using a twist connector (provided).
4. Connect the WHITE wire to the neutral building wire, using a twist connector (provided).
5. Optional: connect the RED wire to the smoke alarm wire, using a twist connector (provided).
NOTE: Insert wires straight into twist connector, then twist clockwise. Make sure all twist connectors are tight. Secure each twist connector with electrical tape. Make sure no bare wire shows below the twist connector.
6. Connect the ground wire from the box to the GREEN screw on the EL500 unit. If there is no ground wire, ground the EL500 unit to the box. If a plastic box, connect to ground as supplied.
7. Tuck wires into wall box leaving room for the EL500 unit.
8. Using screws provided, mount the EL500 unit to the wall box, then install wall plate.
9. Turn power back on at the service panel.



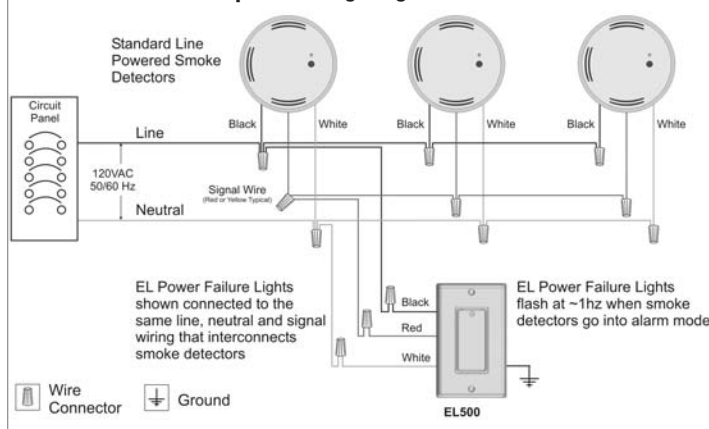
EL500 Standard Wiring Diagram



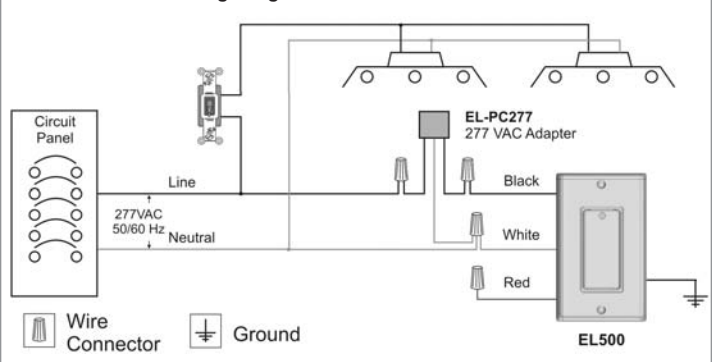
EL500 Standard Wiring Diagram



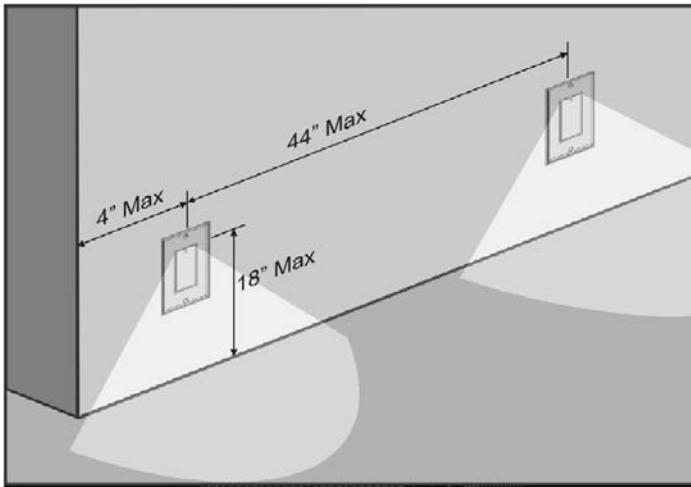
EL500 Smoke Alarm Option Wiring Diagram



EL500 277VAC Wiring Diagram



Install as shown below to provide safety when power failure occurs (in compliance with UL 1994).



- The mounting height of the power failure light to be in accordance with local and national codes but is not to exceed 18 inches above the finished floor height.
- The maximum spacing between power failure lights not to exceed 44 inches.
- The spacing between a corner of a wall or change in direction of the power failure light not to exceed 4 inches.

How To Operate the EL500

The EL500 unit can be operated in six different modes. *NOTE: After installation, the battery reaches maximum charge in about one week.*

- **Night Light ON** — Press the lens once when the night light is OFF and the night light will come ON at 25% of full brightness. In this mode the night light is powered by the building current.
- **Night Light OFF** — Press the lens once when the night light is ON and the night light will power OFF.
- **Power Failure Light ON** — When building current is disconnected (e.g., during a power failure), the power failure light will automatically come ON at 100% of full brightness and remain lit until the battery is discharged (4 hours at a full charge). *NOTE: As the battery runs out of power, the unit will begin to flash and will continue to do so until all power is drained from the battery or power is restored.*
- **Power Failure Light OFF** — When the power failure light is ON (and the unit is operating on battery power), press and hold the lens for 5 or more seconds to manually turn it OFF. *NOTE: You can press and hold the lens again for 5 or more seconds to turn the power failure light back ON.*
- **Battery Test** — After battery has had a minimum of 1 week to charge, press and hold the lens for 5 seconds to switch the unit from building current to battery power, which turns ON the light at the 100% brightness level. If the light doesn't come on, the battery is dead or damaged.
- **Smoke Alarm Signal ON** — When the EL500 receives a signal from a connected smoke alarm or security system, the power failure light will flash ON and OFF continuously at one-second intervals until the alarm signal is removed, or until the battery is drained (4 hours for a fully charged battery).

LIMITED ONE-YEAR WARRANTY

If within one (1) year from the date of purchase, this product fails due to a defect in material or workmanship, Intermatic Incorporated will repair or replace it, at its sole option, free of charge. This warranty is extended to the original household purchaser only and is not transferable. This warranty does not apply to: (a) damage to units caused by accident, dropping or abuse in handling, acts of God or any negligent use; (b) units which have been subject to unauthorized repair, opened, taken apart or otherwise modified; (c) units not used in accordance with instructions; (d) damages exceeding the cost of the product; (e) sealed lamps and/or lamp bulbs, LED's and batteries; (f) the finish on any portion of the product, such as surface and/or weathering, as this is considered normal wear and tear; (g) transit damage, initial installation costs, removal costs, or reinstallation costs.

INTERMATIC INCORPORATED WILL NOT BE LIABLE FOR INCIDENTAL OR CONSEQUENTIAL DAMAGES. SOME STATES DO NOT ALLOW THE EXCLUSION OR LIMITATION OF INCIDENTAL OR CONSEQUENTIAL DAMAGES, SO THE ABOVE LIMITATION OR EXCLUSION MAY NOT APPLY TO YOU. THIS WARRANTY IS IN LIEU OF ALL OTHER EXPRESS OR IMPLIED WARRANTIES. ALL IMPLIED WARRANTIES, INCLUDING THE WARRANTY OF MERCHANTABILITY AND THE WARRANTY OF FITNESS FOR A PARTICULAR PURPOSE, ARE HEREBY MODIFIED TO EXIST ONLY AS CONTAINED IN THIS LIMITED WARRANTY, AND SHALL BE OF THE SAME DURATION AS THE WARRANTY PERIOD STATED ABOVE. SOME STATES DO NOT ALLOW LIMITATIONS ON THE DURATION OF AN IMPLIED WARRANTY, SO THE ABOVE LIMITATION MAY NOT APPLY TO YOU.

This warranty service is available by either (a) returning the product to the dealer from whom the unit was purchased, or (b) mailing the product, along with proof of purchase, postage prepaid to the authorized service center listed below. This warranty is made by: Intermatic Incorporated/After Sales Service/7777 Winn Rd., Spring Grove, Illinois 60081-9698/815-675-7000 <http://www.intermatic.com> Please be sure to wrap the product securely to avoid shipping damage.

INTERMATIC INCORPORATED
SPRING GROVE, ILLINOIS 60081-9698

158--00069