

Model: P1203FR

TWO CIRCUIT ELECTRONIC POOL/SPA CONTROL

IN OUTDOOR SAFETY ENCLOSURE, SUITABLE FOR POOL/SPA EQUIPMENT APPLICATIONS

ELECTRICAL RATINGS:

**CIRCUIT #1: 20 A. Resistive, 120-240V.,* 10 A. Tungsten 120V.,
1.5 HP - 120V., 3 HP - 240V.* 60 Hz Double Pole Single Throw (DPST)**

**CIRCUIT #2: 15 A. Resistive, 10 A. Tungsten , 1 HP Motor - 120 V. 60 Hz.
Single Pole Single Throw (SPST)**

***240 Volt Operation Requires Neutral Connection**

IMPORTANT SAFETY INSTRUCTIONS

When installing and operating this Product and other associated equipment, basic safety precautions should always be followed, including the following:

1. This Control must be installed by a qualified electrician, according to the National and Local Electrical Codes.
2. USE COPPER CONDUCTORS ONLY. If applicable, install this Control not less than 5 feet (3 meters in Canada) from inside edge of pool or spa.
3. Do not exceed the maximum ratings of individual components, wiring devices, and current carrying capacity of conductors.
4. For grounding of the installation, refer to Article 250 and 680 of the National Electrical Code or Article 68 of the Canadian Electrical Code.
5. This Control should not operate any equipment which would cause bodily injury or property damage should it be activated unexpectedly.
6. Always disconnect electricity at main panel before servicing this Control or the equipment connected to it.

READ, FOLLOW AND SAVE THIS INSTRUCTION MANUAL

GENERAL INFORMATION

These Time Controls in Safety Enclosure are specially suited for installations where the automatic operation of the pool/spa filter pump requires occasional interruption/suspension by someone other than a qualified service professional. In addition, the pool/spa light can be operated by a hand held radio remote control.

The electronic timer inside the enclosure is designed to control the pool/spa pump on a 24-hour schedule. It can turn on and off the pump up to eight times within 24 hours and repeat the program daily. The timer is completely enclosed and a replaceable lithium battery will hold-up memory for a minimum of 3 years. The radio receiver, factory installed on top of the enclosure, will control the pool/spa light or other electrical load via the hand held radio transmitter.

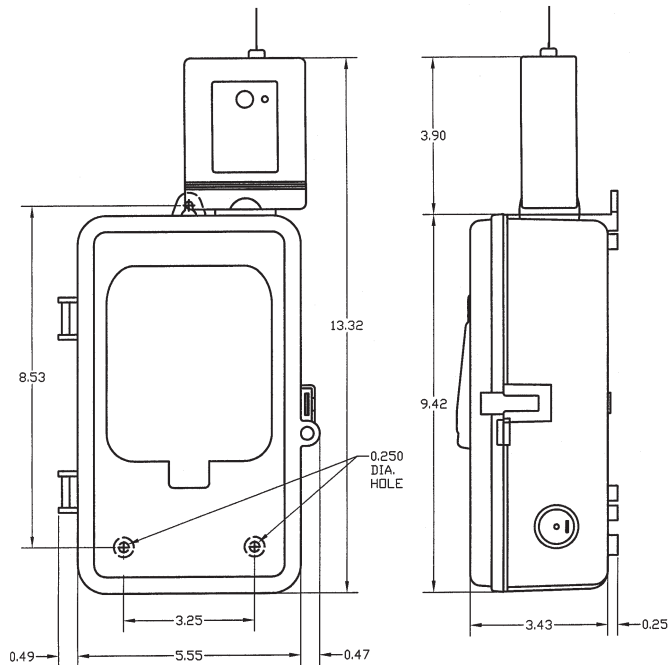


SPECIFICATIONS

Timer: Microprocessor based 24 hour clock
Power Consumption: 8VA
Battery: Type CR2032 1.5V. Lithium
Battery Life: 3 Years Min.
Minimum Interval: 1 Minute
of Programming Periods: 8 ON / 8 OFF
Receiver: Single channel, with manual override

USEFUL INFORMATION

- The higher the Receiver Module, the longer its range.
 For good range and reliable reception, install control as high as practical above ground level.
- Large metal objects divert radio signals. Avoid mounting Control on metal wall, fence or near large metal objects.
- Environmental conditions could effect the operation of the remote control system. For example, in rain the range may be less than normal.
- Certain electric equipment like brush type motors or electronic gas heater igniters emit radio signals and can effect the function of the Receiver Module.
- Antenna orientation may increase or decrease the radio range. For best results, keep the antenna straight and adjust for better radio reception by bending the antenna near its base.



INSTALLATION AND INTERNAL WIRING

Make sure the intended load is within the capacity of the Timer, see ratings on page 1.

CIRCUIT #1

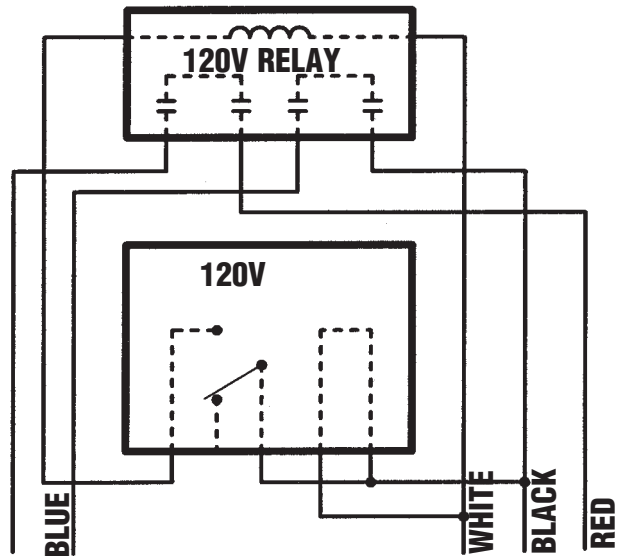
1. Select the proper location (see useful information above) and install Control on a vertical surface or other support, using hardware suitable for the purpose.
2. Prepare the necessary conduit runs as required by the installation layout and pull-in the specified conductors.
3. Follow wiring diagram on page 3, make wire connections as shown.

CIRCUIT #2

This circuit is controlled, via radio signal, by the hand held Radio Transmitter. By the push of a button on the face of the Transmitter, the user is able to turn ON/OFF a piece of equipment connected to the Receiver - installed on top of the enclosure. One transmitter is capable of operating up to four such Receiver Modules from any remote location.

The maximum (open field) range of the system is 100 feet, but the actual range depends on factors like, the age of the battery, proximity of large metal objects, the location of the receiver and the environmental conditions at the time of transmission.

1. Follow wiring diagram on page 3, make wire connections as shown.
2. Turn ON power and test installation. Replace wiring compartment cover, make sure the installation is secure and raintight.
3. Set Timer and set Code, see Instructions on page 3.




2 TRANSMITTER



RECEIVER

SETTING / OPERATING INSTRUCTIONS

Circuit #1 Programming Instructions

To Set or Change the Time of Day: To clear entire memory, press  key. Hold down the CLOCK key while pressing either the HOUR or MINUTE keys. Continue pressing until the desired number is shown. Then simply lift finger off the CLOCK key to set.

To Set Program (ON/OFF times): Press TIMER key once to enter into program mode. Display will show "1 ON-- --". Press the HOUR key and then the MINUTE key to select the desired first ON time. Press TIMER key once. Display will show "1 OFF -- --". Repeat previous step to select the desired first OFF time. Repeat the entire sequence to complete up to eight total ON/OFF times as desired. When programming is done, press the CLOCK key then the SELECT key repeatedly until the indicator bar is above the word "AUTO".

To Review Program: Press TIMER key repeatedly. When done, press CLOCK key to return to the time of day.

To Cancel/Change Part of the Program: Press TIMER key repeatedly until the particular ON or OFF time appears. Set new ON or OFF time. (See: To Set Programs).

To Override the Automatic Operation one time: Press OVR. KEY.

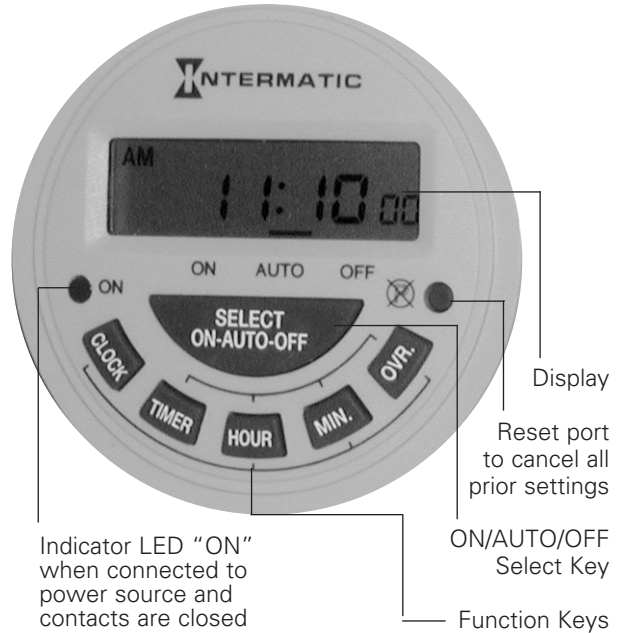
Circuit #2 Code Setting Instructions

Receiver Modules have the capacity to "learn" and remember a unique code, generated by the Transmitter. One Transmitter can "teach" and operate up to four sets of Receiver Modules independently.

1. Turn ON the power and manually operate the load a few times by pushing the red ON/OFF button on the face of the Receiver Module. Turn OFF load.
2. Hold the Transmitter close to the Receiver Module, press and hold the push button on the Transmitter that you choose to operate that particular Module. The red light on the Transmitter will light to indicate that it is transmitting.
3. Press and hold the "Code Set" button on the face of the Receiver Module until green light next to the button flashes once (about one second).

To operate more than one Receiver Modules **independently**, program the Modules as shown in steps 2 and 3 but use a different transmitter button for each Module.

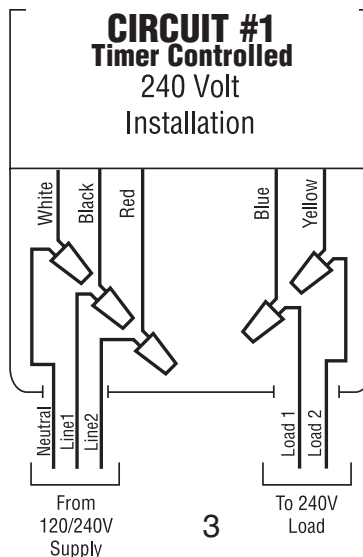
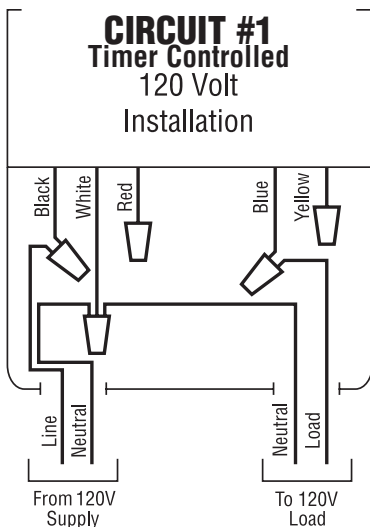
To erase all memorized codes, press and hold CODE SET button on Receiver Module, until the green indicator light alongside goes out (in about 6 seconds).



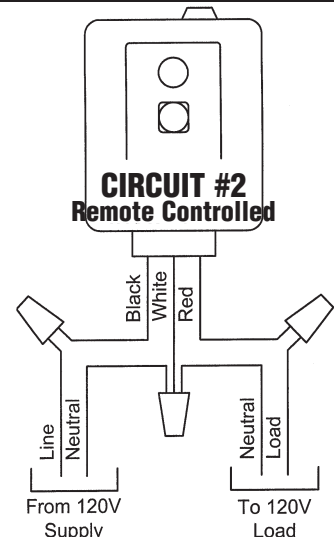
NOTE: Timer will resume automatic operation with the next opposite setpoint.

To Override Automatic Operation Permanently: Press SELECT key to move indicator bar to the desired ON or OFF position. **Note: Timer will not resume automatic operation until indicator bar is repositioned above the word AUTO.**

FIELD WIRING



3



TROUBLESHOOTING

Symptom	Possible Cause(s)	Corrective Action
Blank Display	Discharged battery	Replace battery
	Defective timer	Replace timer
Timer will not respond to programming	Memory is full	Press X to clear memory
Timer will not function as programmed	Timer is not in AUTO mode	Press SELECT key and move indicator bar over to AUTO
Timer is ON at all times	Timer is in ON mode	See above
	Defective timer	Replace timer
	Defective relay	Replace relay
No response to transmitter signal at any time	No power	Turn ON power at main panel
	Transmitter battery dead	Replace battery
	Timer and transmitter are on two different codes	Change code settings (see inside)
	Faulty transmitter	Check battery connections Replace transmitter
No response to transmitter signal some of the time	Weak battery	Replace battery
	Appliance with brush type motor is in use	Relocate appliance and/or connect to another circuit
	Other radio transmitter (police, etc.) is operating nearby	
	Timer is at edge of radio range	Remove/relocate Timer
Insufficient Range	Weak Battery	Replace Battery
	Antenna too close to ground	Relocate Timer
	Transmitter is held too close to ground	Hold transmitter at least 3 ft. above ground.
	Weak signal due to obstruction	Remove/relocate Timer
	Antenna is bent or coiled.	Straighten antenna. Adjust by bending antenna near bottom of antenna only.

ONE YEAR LIMITED WARRANTY

If within the warranty period specified, this product fails due to a defect in material or workmanship, Intermatic Incorporated will repair or replace it, at its sole option, the unit free of charge. This warranty applies only to the original purchaser and is not transferable. This warranty does not apply to: (a) damage caused by accident, abuse, mishandling, dropping, acts of God, or any negligent use; (b) units which have been subject to unauthorized repair, opened, taken apart, or otherwise modified; (c) units not used in accordance with instructions; (d) damages exceeding the cost of the product. Some states do not allow a limitation of damages, so the foregoing limitation may not apply to you. This warranty gives you specific legal rights and you may have other rights that vary from state to state.

INTERMATIC INCORPORATED WILL NOT BE LIABLE FOR INCIDENTAL OR CONSEQUENTIAL DAMAGES. THIS WARRANTY IS IN LIEU OF ALL OTHER EXPRESS OR IMPLIED WARRANTIES. ALL IMPLIED WARRANTIES, INCLUDING THE WARRANTY OF MERCHANTABILITY AND THE WARRANTY OF FITNESS FOR A PARTICULAR PURPOSE, ARE HEREBY MODIFIED TO EXIST ONLY AS CONTAINED IN THIS LIMITED WARRANTY, AND SHALL BE OF THE SAME DURATION AS THE WARRANTY PERIOD STATED ABOVE.

This warranty service is available by either (a) returning the product to the dealer from whom the unit was purchased, or (b) mailing postage prepaid to the nearest authorized service center listed. Please be sure to wrap the product securely when mailing to avoid shipping damage. This warranty is made by: Intermatic Incorporated/After Sales Service, 7777 Winn Rd., Spring Grove, IL 60081-9698/815-675-7000 <http://www.intermatic.com>

Because of our commitment to continuing research and improvements, Intermatic Incorporated reserves the right to make changes, without notice, in the specifications and material contained herein and shall not be responsible for any damages, direct or consequential, caused by reliance on the material presented.

INTERMATIC INCORPORATED, SPRING GROVE, IL 60081-9698
<http://www.intermatic.com>