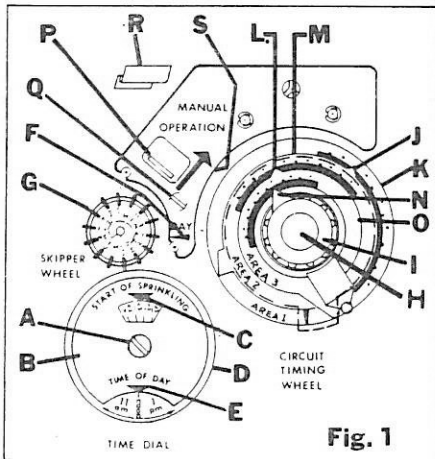


# INTERMATIC SPRINKLER TIMER THREE CIRCUIT

## LS-7043

**SWITCH RATING: 1/8 HP; 115 VA Pilot Duty; 24 Volts**  
**CLOCK MOTOR RATING: 24 Volts; 60 HZ**



SET TIME FOR SPRINKLING, BY LOOSENING SCREW (A) ON "TIME DIAL" AND TURNING BLACK DIAL PLATE (B) IN EITHER DIRECTION SO THAT ARROW (C) POINTS TO DESIRED SPRINKLING TIME LOCATED IN THE WINDOW. TIGHTEN SCREW (A) FIRMLY. (SEE FIG. 1) SET TIME OF DAY, BY LIFTING UP YELLOW DIAL (D) BELOW BLACK DIAL PLATE ON "TIME DIAL" AND TURNING IT IN EITHER DIRECTION UNTIL ACTUAL TIME OF DAY IS LOCATED AT ARROW (E). SET SPRINKLING FREQUENCY, OR DAYS ON WHICH SPRINKLING IS DESIRED, BY MOVING THE "SKIPPER WHEEL" IN EITHER DIRECTION UNTIL CURRENT DAY OF WEEK IS OPPOSITE ARROW (F). LIFT UP TABS (G) ON WHEEL FOR DAY SPRINKLING OPERATION IS DESIRED. SET SPRINKLING DURATION FOR EACH AREA BY LOOSENING SCREW (H) IN TOP KNOB (I) OF "AREA TIMING WHEEL". THEN FOR AREA NO. 1, LIFT AND SET BOTTOM POINTER (J) TO DESIRED LENGTH OF TIME AS INDICATED BY RED NUMBERS ON DIAL (K). FOR AREA NO. 2, LIFT AND SET MIDDLE POINTER (L) TO DESIRED LENGTH OF TIME AS INDICATED BY BLUE NUMBERS ON DIAL (M). TIGHTEN SCREW (H) FIRMLY WITH POINTERS (J & L) IN PLACE. FOR AREA NO. 3 LIFT TOP KNOB (I) AND SET TOP POINTER (N) TO DESIRED LENGTH OF TIME AS INDICATED BY THE YELLOW NUMBERS ON DIAL (O). THEN RELEASE KNOB.

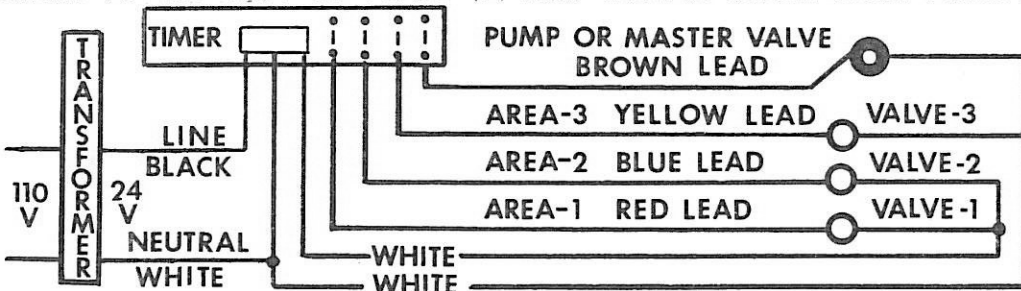
DO NOT SET AREA TIMINGS FOR LESS THAN 5 OR MORE THAN 60 MINUTES. TOTAL TIME FOR THREE AREAS MUST NOT EXCEED 175 MINUTES OR DAMAGE MAY RESULT.

FOR MANUAL OPERATION, PUSH LEVER (P) IN DIRECTION OF ARROW AS FAR AS IT WILL GO AND THEN RELEASE.

TO REMOVE MECHANISM, FIRST REMOVE SCREW (Q) AT TOP LEFT OF DECORATIVE COVER PLATE AND LIFT OFF THIS PLATE. THEN DEPRESS SPRING (R) AT TOP INSIDE OF CASE, HOOK FINGER BELOW BOTTOM PLATE AT MANUAL OPERATION "ARROW" (S) AND LIFT OUT.

TO REMOVE MECHANISM, SLIDE BOTTOM END OF MECHANISM BASE BETWEEN LOWER PAIR OF PROJECTING EARS INSIDE OF CASE. PUSH MECHANISM INTO PLACE. THEN FIT DECORATIVE COVER PLATE OVER MECHANISM, INSERT SCREW AT TOP LEFT OF PLATE (Q) AND TIGHTEN SCREW DOWN FIRMLY.

TO REMOVE MECHANISM, SLIDE BOTTOM END OF MECHANISM BASE BETWEEN LOWER PAIR OF PROJECTING EARS INSIDE OF CASE. PUSH MECHANISM INTO PLACE. THEN FIT DECORATIVE COVER PLATE OVER MECHANISM, INSERT SCREW AT TOP LEFT OF PLATE (Q) AND TIGHTEN SCREW DOWN FIRMLY.



CAUTION: DO NOT EXCEED 1/8 HP OR 115 V.A. RATINGS FOR DIRECT PUMP OR MASTER VALVE. FOR CONTROLLING TWO AREAS, SET POINTER (N) TO 5 MINUTES ON YELLOW DIAL. FOR CONTROLLING ONLY ONE AREA, SET POINTER (N) AND POINTER (L) TO 5 MINUTES ON YELLOW AND BLUE DIALS RESPECTIVELY. FOLD AND TAPE CORRESPONDING YELLOW AND BLUE SWITCH LEADS.

THIS TIME CONTROL IS GUARANTEED TO BE FREE FROM DEFECTS IN WORKMANSHIP AND MATERIALS WITH NORMAL USE FOR A PERIOD OF ONE YEAR FROM DATE OF SHIPMENT. IF SERVICE IS NEEDED, SEND MECHANISM (ONLY) TO NEAREST AUTHORIZED FACTORY SERVICE STATION (TRANSPORTATION CHARGES PREPAID). ATTACH TAG STATING DATE OF INSTALLATION AND NATURE OF TROUBLE.

**INTERMATIC INCORPORATED**  
 SPRING GROVE, ILLINOIS 60081