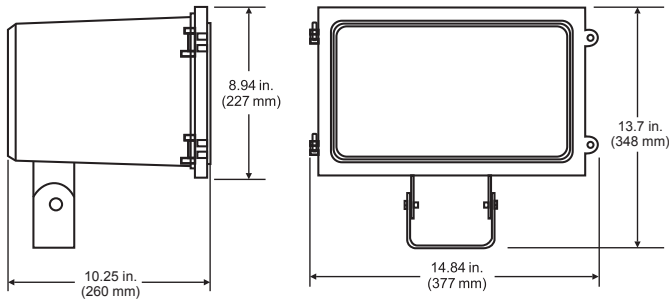




HID Flood Light - FL Series

INSTALLATION INSTRUCTIONS

Models: FL250HPS, FL400HPS, FL250MH, FL400MH
FL250HSPT, FL400HPST, FL250MHT & FL400MHT



**FOR OUTDOOR USE ONLY
NOT FOR USE IN HAZARDOUS
ATMOSPHERES**

**IMPORTANT: Read instruction sheet
carefully before installing fixture. Retain
instructions for future reference.**

ELECTRICAL REQUIREMENTS

A qualified electrician should complete all required wiring. Models FL250HPS, FL400HPS, FL250MH & FL400MH will accept 120, 208, 240 or 277 Volts AC. Models FL250HSPT, FL400HPST, FL250MHT & FL400MHT will accept 120, 277 or 347 Volts AC. Fixtures must be properly grounded for safety. A mounting suitable for outdoor use and rated for wet locations is required. Follow all applicable electrical codes and regulations.

⚠️ WARNING

Please see below for list of warnings.

⚠️ WARNING Electric shock hazard

Disconnect power at circuit breaker or fuse box before installing or servicing light.

⚠️ WARNING Fire hazard

USE MIN 90°C SUPPLY CONDUCTORS. CONNECT TO SUPPLY IN EXTERNAL JUNCTION BOX ONLY.

Lamp and housing become very hot during use. Ensure free air circulation around unit to dissipate heat. Avoid enclosed locations and locations where flammable debris (leaves, cut grass, etc.) might collect. Avoid locations where humans or animals might accidentally touch fixture.

⚠️ WARNING Fire hazard

USE MINIMUM 125°C SUPPLY CONDUCTORS IF CORD IS NOT USED.

⚠️ WARNING Explosion hazard

Never operate light without securing the lens door. When light is operating, the gas in the lamp inner arc tube is at high pressure. Never operate light if the fixture lens or outer glass envelope of the lamp is broken or missing.

⚠️ WARNING Explosion hazard

Wear safety glasses and gloves when handling lamp, High Pressure Sodium outer envelope is under vacuum and could implode. Metal Halide outer envelope is pressurized and could explode if broken.

⚠️ WARNING UV hazard (Metal Halide Lamps Only)

The type of lamp used in this fixture can cause serious skin burn and eye inflammation from short wave ultra violet radiation if outer envelope of the lamp is broken or punctured, and the arc tube continues to operate. Do not use where people will remain for more than a few minutes. Certain types of lamps that will automatically extinguish when the outer envelope is broken or punctured are commercially available.

Lamp Types:

High Pressure Sodium 250 Watt & 400 Watt
High Pressure Sodium 250 Watt & 400 Watt with Tri-Tap
Metal Halide 250 Watt & 400 Watt
Metal Halide 250 Watt & 400 Watt with Tri-Tap

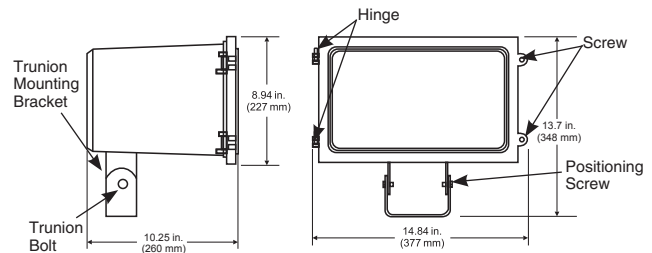


Figure 1

MOUNTING & WIRING

1. Remove Trunion Bolts and positioning screw to free Trunion Mounting Bracket.
2. Install Trunion Mounting Bracket to desired location. Fixture should be horizontal when attached to mounting bracket. (See Figure 2)
3. Loosen (2) screws and open Lens cover. Remove lens cover and set aside to prevent damage during installation of fixture.
4. Loosen (4) screws and remove reflector/lampholder assembly.
5. Identify supply voltage.

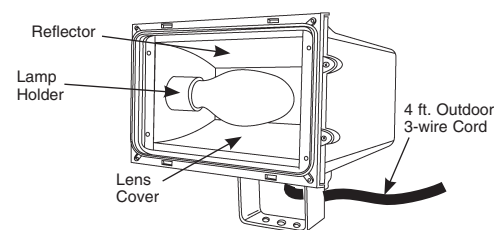


Figure 2 (Mount Fixture horizontal)

MOUNTING & WIRING (continued)

6. Select appropriate fixture wire to match incoming voltage. Models FL250HPS, FL400HPS, FL250MH & FL400MH are shipped with 277 V wire ready for connection. Models FL250HSPT, FL400HPST, FL250MHT & FL400MHT are shipped with 347 V wire ready for connection. If supply voltage is lower, cap wire marked 277V (or 347 V for tri-tap models) with appropriate twist on wire connector and strip fixture wire marked with matching voltage (see Figure 3 through Figure 5)
7. Using provided twist on or other approved connectors, connect the fixture wires to the 3-wire cord.
 - a. Connect the selected voltage fixture wire to the Black (hot) cord wire.
 - b. Connect the white fixture wire marked "COM" to the White (neutral) cord wire.
 - c. Connect the Green (equipment ground) cord wire to the fixture ground screw.
8. Confirm all unused fixture wires are capped.
9. Replace and secure reflector/lampholder assembly with (4) screws.
10. Install the fixture to the Trunion Mounting Bracket using the (2) Trunion Bolts. On the trunion assembly there are (3) position holes in the outer yoke and (5) positioning holes in the inner yoke. Align the positioning holes as desired and secure with Positioning Screw.
11. Using approved twist on wire connector, connect the free end of the 4ft cord to the supply wires inside an approved outdoor, watertight junction box.
 - a. Connect the Black (hot) cord wire to the Black (hot) supply wire.
 - b. Connect the White (neutral) cord wire to the White (neutral) supply wire.

- c. Connect the Green (equipment ground) cord wire to the Green (equipment ground) supply wire.

Alternate wiring: If desired connections may be made inside fixture using supply wire rating minimum 125°.

12. Screw lamp into lampholder until finger-tight.
13. Install, close, and secure lens cover with (2) screws. To weatherproof fixture, seal all holes in housing (mounting conduit, plugs, photocontrols, etc.) with silicone sealant.
14. To operate, restore power to the circuit and switch light on.

CAUTION (Metal Halide Lamps Only)

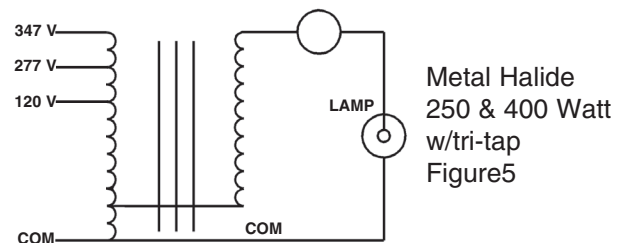
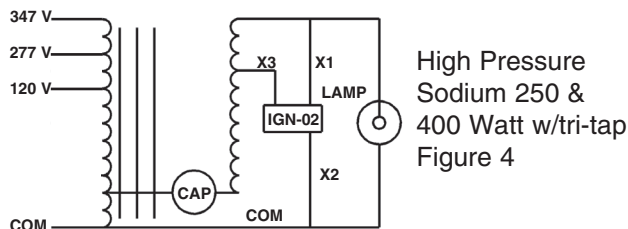
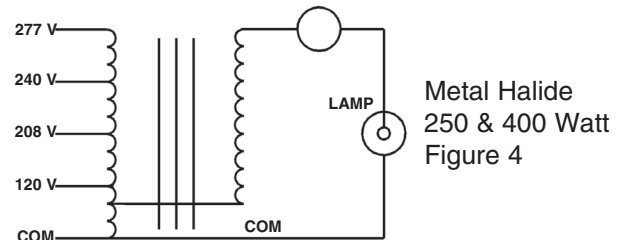
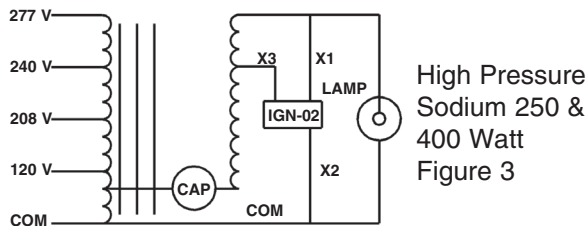
Do not use lamp beyond manufactures rated life to reduce chance of lamp rupture. Turn lamp off at least once for 15 minutes per week to reduce chance of lamp rupture.

LAMP REPLACEMENT

CAUTION

Use lamp of correct type and wattage as specified on fixture.

1. Turn off power at circuit breaker or fuse box. Allow fixture and lamp to cool.
2. Loosen (2) screws and swing hinged fixture lens door open. Remove old lamp and replace with new lamp of correct type and wattage. Screw lamp into socket in lampholder until finger-tight.
3. Close and secure lens door, making sure that gasket is properly seated, free of debris, and compressed to seal out moisture.
4. Turn power back on.
5. Properly dispose of lamp per manufacturer's recommendations.



LIMITED 1 YEAR WARRANTY

If within one (1) year from the date of purchase, this product fails due to a defect in material or workmanship, Intermatic Incorporated will repair or replace it, at its sole option, free of charge. This warranty is extended to the original purchaser only and is not transferable. This warranty does not apply to: (a) damage to units caused by accident, dropping or abuse in handling, acts of God or any negligent use; (b) units which have been subject to unauthorized repair, opened, taken apart or otherwise modified; (c) units not used in accordance with instructions; (d) damages exceeding the cost of the product; (e) sealed lamps and/or lamp bulbs; (f) the finish on any portion of the product, such as surface and/or weathering, as this is considered normal wear and tear; (g) transit damage, initial installation costs, removal costs, or reinstallation costs. INTERMATIC INCORPORATED WILL NOT BE LIABLE FOR INCIDENTAL OR CONSEQUENTIAL DAMAGES. SOME STATES DO NOT ALLOW THE EXCLUSION OR LIMITATION OF INCIDENTAL OR CONSEQUENTIAL DAMAGES, SO THE ABOVE LIMITATION OR EXCLUSION MAY NOT APPLY TO YOU. THIS WARRANTY IS IN LIEU OF ALL OTHER EXPRESS OR IMPLIED WARRANTIES. ALL IMPLIED WARRANTIES, INCLUDING THE WARRANTY OF MERCHANTABILITY AND THE WARRANTY OF FITNESS FOR A PARTICULAR PURPOSE, ARE HEREBY MODIFIED TO EXIST ONLY AS CONTAINED IN THIS LIMITED WARRANTY, AND SHALL BE OF THE SAME DURATION AS THE WARRANTY PERIOD STATED ABOVE. SOME STATES DO NOT ALLOW LIMITATIONS ON THE DURATION OF AN IMPLIED WARRANTY, SO THE ABOVE LIMITATION MAY NOT APPLY TO YOU.

This warranty service is available by either (a) returning the product to the dealer from whom the unit was purchased, or (b) mailing the product, along with proof of purchase, postage prepaid to the authorized service center listed below. This warranty is made by: Intermatic Incorporated/After Sales Service/7777 Winn Rd., Spring Grove, Illinois 60081-9698/815-675-7000 <http://www.intermatic.com> Please be sure to wrap the product securely to avoid shipping damage.

THESE INSTRUCTIONS DO NOT COVER ALL VARIATIONS IN EQUIPMENT, NOR DO THEY PROVIDE FOR ALL SITUATIONS RELATED TO FIXTURE INSTALLATION, OPERATION OR MAINTENANCE. FOR FURTHER INFORMATION CONTACT YOUR DISTRIBUTOR OR INTERMATIC INCORPORATED - SPRING GROVE, ILLINOIS 60081 (815) 675-7000 www.intermatic.com